



ELK Biotechnology

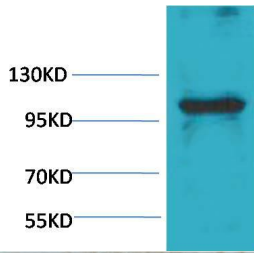
eEF1A2 binding protein Rabbit pAb

Catalog NO.: EA252

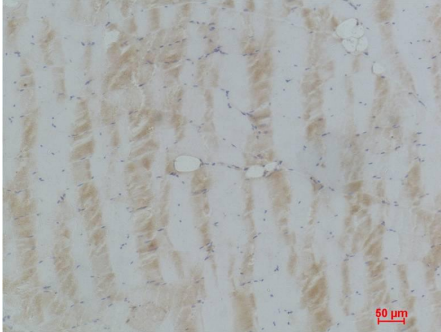
For research use only.

Overview

Product name	eEF1A2 binding protein Rabbit polyclonal antibody
Source	Rabbit
Applications	WB, IHC
Species reactivity	Human, Rat, Mouse, Pig
Recommended dilutions	WesternBlot:1/500-1000 Immunohistochemistry:1/50-100 NOTE: Optimal dilutions should be determined by the end user.
Immunogen	Recombinant Protein
Species	Human
Storage	PBS with 0.02% sodium azide and 50% glycerol pH 7.4. Store at -20° C. Avoid repeated freeze-thaw cycles.
Isotype	IgG
Clonality	Polyclonal
Concentration	1 mg/ml
Observed band	115kDa
GeneID (Human)	91156
Human Swiss-Prot No.	Q86VF2
Cellular localization	Cytoplasm, Nucleus
Alternative Names	IGFN1 antibody, immunoglobulin-like and fibronectin type III domain containing 1 antibody, EEF1A2BP1 antibody
Background	Elongation factor 1-alpha 2 is a protein that in humans is encoded by the EEF1A2 gene. This gene encodes an isoform of the alpha subunit of the elongation factor-1 complex, which is responsible for the enzymatic delivery of aminoacyl tRNAs to the ribosome.



Western blot analysis of Pig Skeletal Muscle with eEF1A2 Rabbit pAb EA252 diluted at 1:1,000.



Immunohistochemical analysis of paraffin-embedded Pig Skeletal Muscle using eEF1A2(EA252) Rabbit pAb diluted at 1:100.