



# ELK Biotechnology

SOD2 Rabbit pAb

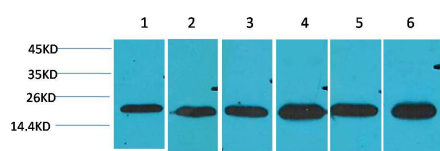
Catalog NO.: EA211

For research use only.

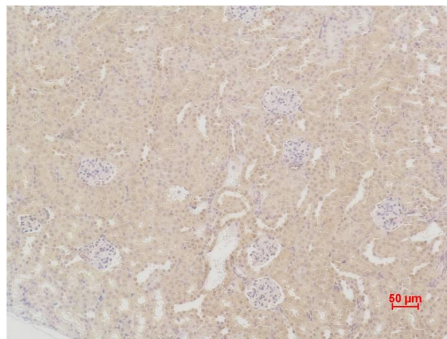
## Overview

---

Product name	SOD2 Rabbit polyclonal antibody
Source	Rabbit
Applications	WB, IHC
Species reactivity	Human, Rat, Mouse
Recommended dilutions	WesternBlot:1/1000-2000 Immunohistochemistry:1/200-500 <b>NOTE: Optimal dilutions should be determined by the end user.</b>
Immunogen	Recombinant Protein
Species	Human
Storage	PBS with 0.02% sodium azide and 50% glycerol pH 7.4. Store at -20° C. Avoid repeated freeze-thaw cycles.
Isotype	IgG
Clonality	Polyclonal
Concentration	1 mg/ml
Observed band	<b>22kDa</b>
GeneID (Human)	6648
Human Swiss-Prot No.	P04179
Cellular localization	Mitochondrion matrix
Alternative Names	IPO B antibody, Manganese SOD antibody, Superoxide dismutase mitochondrial antibody
Background	Superoxide dismutase 2, mitochondrial, also known as SOD2, is an enzyme which in humans is encoded by the SOD2 gene. This gene is a member of the iron/manganese superoxide dismutase family. It encodes a mitochondrial matrix protein that forms a homotetramer and binds one manganese ion per subunit.



Western blot analysis of 1) Hela, 2)HepG2, 3)C2C12, 4) Mouse Liver Tissue, 5) Rat Brain Tissue, 6) Rat Liver Tissue with SOD2 Rabbit pAb EA211 diluted at 1:2,000.



Immunohistochemical analysis of paraffin-embedded Mouse Kidney Tissue using SOD2 (EA211) Rabbit pAb diluted at 1:200.