



ELK Biotechnology

Claudin-2 (8H11) Mouse mAb

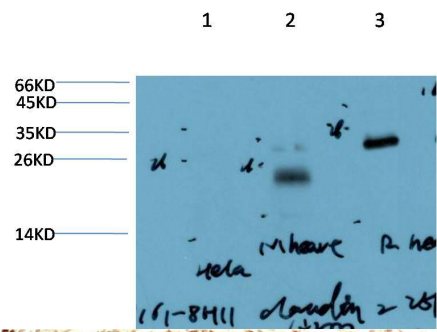
Catalog NO.: EM1403

For research use only.

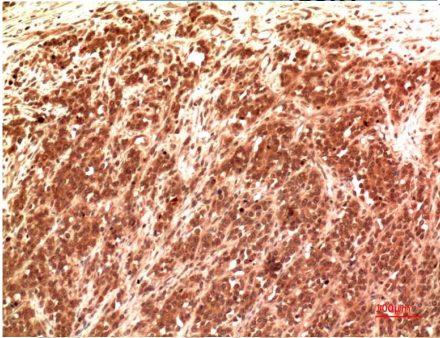
Overview

Product name	Claudin-2 (8H11) Mouse Monoclonal antibody
Source	Mouse
Applications	WB IHC
Species reactivity	Human Rat Mouse
Recommended dilutions	WesternBlot:1/1000-2000 Immunohistochemistry:1/100-1/200 NOTE: Optimal dilutions should be determined by the end user.
Immunogen	Synthetic Peptide
Species	Human
Storage	PBS with 0.02% sodium azide and 50% glycerol pH 7.4. Store at -20° C. Avoid repeated freeze-thaw cycles.
Isotype	IgG1
Clonality	Monoclonal
Concentration	1 mg/ml
Observed band	25kDa
GenelD (Human)	9075
Human Swiss-Prot No.	P57739
Cellular localization	Cell junctiontight junctionCell membrane
Alternative Names	N/A
Background	The claudin family is composed of 23 integral membrane proteins and their expression which varies among tissue types may determine both the strength and properties of the epithelial barrier. Alteration in claudin protein expression pattern is associated with several types of cancer . Claudin-2 is expressed primarily in the proximal tubule of the normal mammalian kidney where it regulates transepithelial ion (e.g. Na ⁺ Cl ⁻) reabsorption . Increased expression of Claudin-2 has been reported in some cancer cell lines

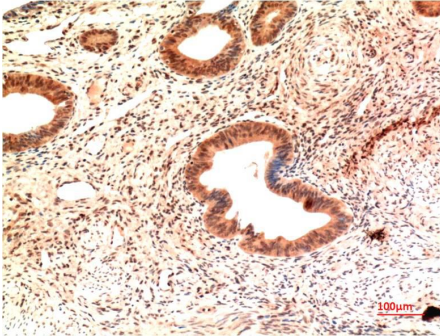
including A549 lung adenocarcinoma cells where its nuclear distribution was positively associated with enhanced proliferation .



Western blot analysis of) Hela Cell Lysate 2) Mouse Heart Tissue Lysate 3) Rat Heart Tissue Lysate using Claudin-2 (EM1403) Mouse mAb diluted at:2000.



Immunohistochemical analysis of paraffin-embedded Human Kidney Carcinoma Tissue using Claudin-2 (EM1403) Mouse mAb diluted at:200.



Immunohistochemical analysis of paraffin-embedded Human Endometrial Carcinoma Tissue using Claudin-2 (EM1403) Mouse mAb diluted at:200.