



# ELK Biotechnology

ATG7 (3D6) Mouse mAb

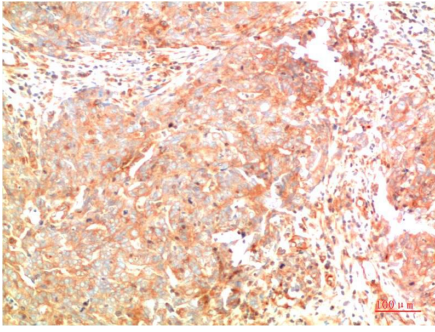
Catalog NO.: EM1385

For research use only.

## Overview

---

Product name	ATG7 (3D6) Mouse Monoclonal antibody
Source	Mouse
Applications	IHC
Species reactivity	Human Mouse Rat
Recommended dilutions	Immunohistochemistry:1/100-200 <b>NOTE: Optimal dilutions should be determined by the end user.</b>
Immunogen	Recombinant Protein
Species	Human
Storage	PBS with 0.02% sodium azide and 50% glycerol pH 7.4. Store at -20° C. Avoid repeated freeze-thaw cycles.
Isotype	IgG1
Clonality	Monoclonal
Concentration	1 mg/ml
Observed band	78kDa
GeneID (Human)	10533
Human Swiss-Prot No.	O95352
Cellular localization	Cytoplasm
Alternative Names	APG7 GSA7 Autophagy related protein 7
Background	The molecular machinery of autophagy was largely discovered in yeast and referred to as autophagy-related (Atg) genes. Formation of the autophagosome involves a ubiquitin-like conjugation system in which Atg12 is covalently bound to Atg5 and targeted to autophagosome vesicles. This conjugation reaction is mediated by the ubiquitin E1-like enzyme Atg7 and the E2-like enzyme Atg10.



Immunohistochemical analysis of paraffin-embedded Human Breast Carcinoma Tissue using ATG7 (EM1385) Mouse mAb diluted at:200.