



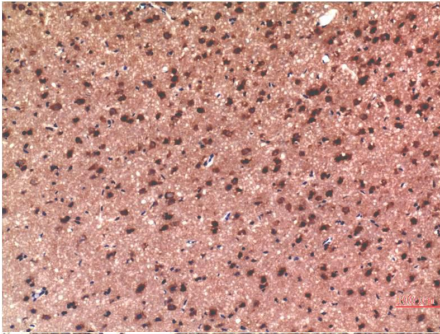
# ELK Biotechnology

**Tau (10E3) Mouse mAb**  
**Catalog NO.: EM1321**  
**For research use only.**

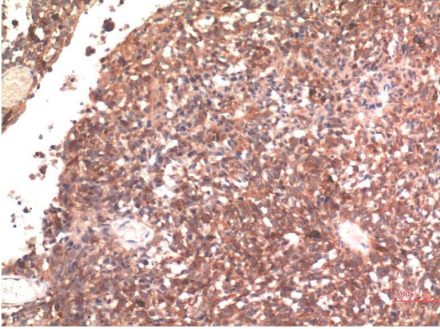
## Overview

---

Product name	Tau (10E3) Mouse Monoclonal antibody
Source	Mouse
Applications	<b>WB IHC</b>
Species reactivity	<b>Human Rat Mouse</b>
Recommended dilutions	<b>WesternBlot:1/1000-2000</b> <b>Immunohistochemistry:1/100-200</b> <b>NOTE: Optimal dilutions should be determined by the end user.</b>
Immunogen	Synthetic Peptide
Species	Human
Storage	PBS with 0.02% sodium azide and 50% glycerol pH 7.4. Store at -20° C. Avoid repeated freeze-thaw cycles.
Isotype	IgG1
Clonality	Monoclonal
Concentration	1 mg/ml
Observed band	<b>50-80kDa</b>
GenelD (Human)	4137
Human Swiss-Prot No.	P10636
Cellular localization	N/A
Alternative Names	Mixed lineage kinase domain like protein FLJ34389
Background	Tau is a heterogeneous microtubule-associated protein that promotes and stabilizes microtubule assembly especially in axons.



Immunohistochemical analysis of paraffin-embedded Rat Brain Tissue using Tau ( EM1321 ) Mouse mAb diluted at:200.



Immunohistochemical analysis of paraffin-embedded Human Brain Tissue using Tau ( EM1321 ) Mouse mAb diluted at:200.