



# ELK Biotechnology

Luciferase (2G11) Mouse mAb

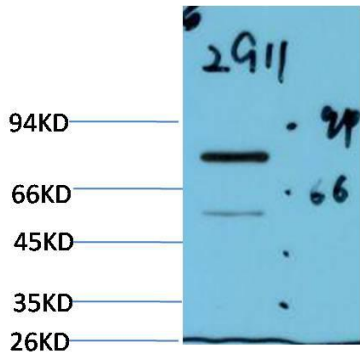
Catalog NO.: EM1305

For research use only.

## Overview

---

Product name	Luciferase (2G11) Mouse Monoclonal antibody
Source	Mouse
Applications	<b>WB</b>
Species reactivity	<b>Firefly</b>
Recommended dilutions	<b>WesternBlot:1/1000-2000</b> <b>NOTE: Optimal dilutions should be determined by the end user.</b>
Immunogen	Synthetic Peptide
Species	Firefly
Storage	PBS with 0.02% sodium azide and 50% glycerol pH 7.4. Store at -20° C. Avoid repeated freeze-thaw cycles.
Isotype	IgG1
Clonality	Monoclonal
Concentration	1 mg/ml
Observed band	<b>60kDa</b>
GeneID (Human)	N/A
Human Swiss-Prot No.	P08659
Cellular localization	Peroxisome
Alternative Names	N/A
Background	Luciferase produces green light with the wavelength of 562 nm. Luciferase catalyzes the reaction: D-firefly luciferin + O <sub>2</sub> + ATP = firefly oxyluciferin + CO <sub>2</sub> + AMP + diphosphate + light. This antibody detects the Luciferase protein of Photinus pyralis (Common eastern firefly) (Lampyrus pyralis).



Western blot analysis of Firefly Luciferase Transfected HeLa Cell Lysate using Luciferase (EM1305) Mouse mAb diluted at:2000.