



ELK Biotechnology

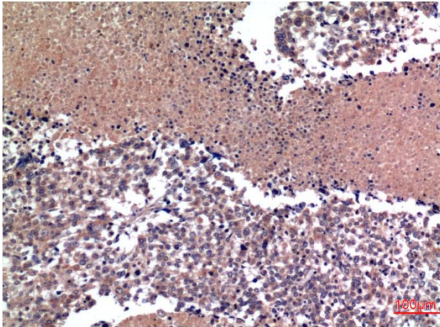
Cyclin B1 (1A5) Mouse mAb

Catalog NO.: EM1299

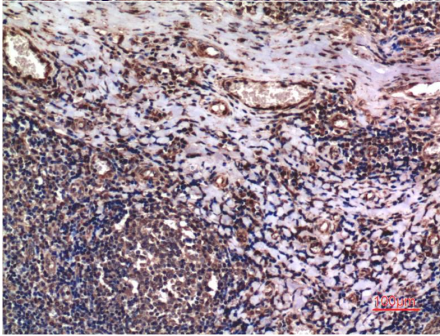
For research use only.

Overview

Product name	Cyclin B1 (1A5) Mouse Monoclonal antibody
Source	Mouse
Applications	IHC
Species reactivity	Human Rat Mouse
Recommended dilutions	Immunohistochemistry:1/200-500 NOTE: Optimal dilutions should be determined by the end user.
Immunogen	Synthetic Peptide
Species	Human
Storage	PBS with 0.02% sodium azide and 50% glycerol pH 7.4. Store at -20° C. Avoid repeated freeze-thaw cycles.
Isotype	IgG
Clonality	Monoclonal
Concentration	1 mg/ml
Observed band	55kDa
GeneID (Human)	891
Human Swiss-Prot No.	P14635
Cellular localization	Cytoplasm Cytoskeleton Nucleus
Alternative Names	ATG8E MAP1LC3Aautophage-related protein LC3A
Background	Cyclin B1 is a regulatory protein involved in mitosis. The gene product complexes with p34 (Cdk1) to form the maturation-promoting factor (MPF). Two alternative transcripts have been found a constitutively expressed transcript and a cell cycle-regulated transcript that is expressed predominantly during G2/M phase of the cell cycle.



Immunohistochemical analysis of paraffin-embedded Human Lung Carcinoma Tissue using Cyclin B1 (EM1299) Mouse mAb diluted at:200.



Immunohistochemical analysis of paraffin-embedded Human Tonsil Tissue using Cyclin B1 (EM1299) Mouse mAb diluted at:200.