



ELK Biotechnology

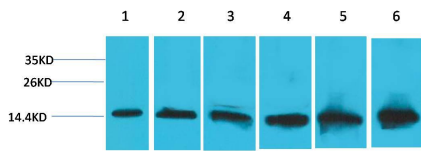
Cytochrome C Mouse mAb

Catalog NO.: EM1182

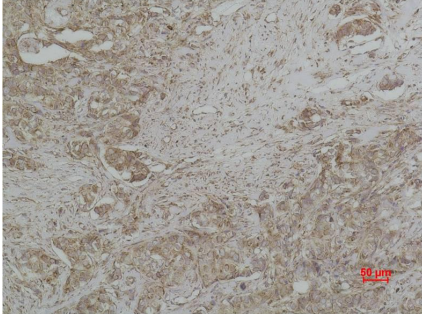
For research use only.

Overview

Product name	Cytochrome C Mouse Monoclonal antibody
Source	Mouse
Applications	WB IHC
Species reactivity	Human Rat Mouse
Recommended dilutions	WesternBlot:1/1000-5000 Immunohistochemistry:1/500-1000 NOTE: Optimal dilutions should be determined by the end user.
Immunogen	Recombinant Protein
Species	Human
Storage	PBS with 0.02% sodium azide and 50% glycerol pH 7.4. Store at -20° C. Avoid repeated freeze-thaw cycles.
Isotype	IgG1
Clonality	Monoclonal
Concentration	1 mg/ml
Observed band	14kDa
GenelD (Human)	54205
Human Swiss-Prot No.	P99999
Cellular localization	Mitochondrion matrix
Alternative Names	CYC antibody CYCS antibody HCS antibody THC4 antibody Cytochrome C somatic antibody
Background	The cytochrome complex or cyt c is a small hemeprotein found loosely associated with the inner membrane of the mitochondrion. It belongs to the cytochrome c family of proteins.



Western blot analysis of) Hela 2) 293T 3)3T3 4)Mouse Liver Tissue 5) Rat Liver Tissue 6) Rat Kidney Tissue with Cytochrome C Mouse mAb EM1182 diluted at:2000.



Immunohistochemical analysis of paraffin-embedded human Breast carcinoma using Cytochrome C (EM1182) Mouse mAb diluted at:500.