



ELK Biotechnology

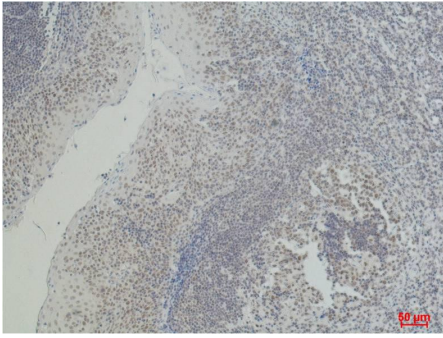
CD2 Mouse mAb

Catalog NO.: EM1069

For research use only.

Overview

Product name	CD2 Mouse Monoclonal antibody
Source	Mouse
Applications	IHC
Species reactivity	Human Rat Mouse
Recommended dilutions	Immunohistochemistry:1/200-500 NOTE: Optimal dilutions should be determined by the end user.
Immunogen	Synthetic Peptide
Species	Human
Storage	PBS with 0.02% sodium azide and 50% glycerol pH 7.4. Store at -20° C. Avoid repeated freeze-thaw cycles.
Isotype	IgG1
Clonality	Monoclonal
Concentration	1 mg/ml
Observed band	N/A
GeneID (Human)	914
Human Swiss-Prot No.	P06729
Cellular localization	Membrane
Alternative Names	CD2 molecule Erythrocyte receptor LFA 2 LFA 3 receptor Rosette receptor SRBC T cell surface antigen CD2 T11
Background	CD2 (cluster of differentiation 2) is a cell adhesion molecule found on the surface of T cells and natural killer (NK) cells. It has also been called T-cell surface antigen T11/Leu-5 LFA-2 LFA-3 receptor erythrocyte receptor and rosette receptor. It interacts with other adhesion molecules such as lymphocyte function-associated antigen-3 (LFA-3/CD58) in humans or CD48 in rodents which are expressed on the surfaces of other cells.



Immunohistochemical analysis of paraffin-embedded Human Tonsil Carcinoma using CD2 (EM1069) Mouse mAb diluted at:500.