



ELK Biotechnology

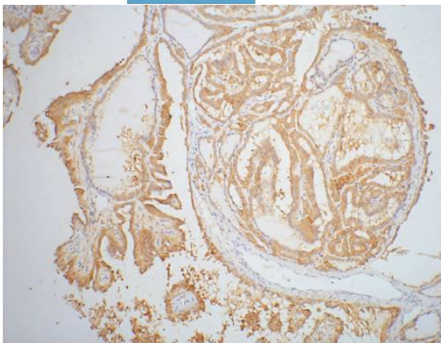
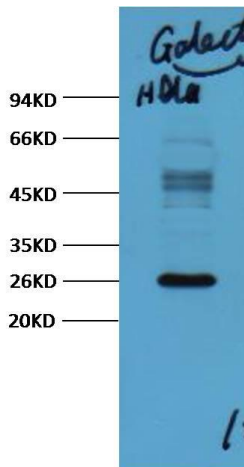
Galectin-3 Mouse mAb
Catalog NO.: EM1043
For research use only.

Overview

Product name	Galectin-3 Mouse Monoclonal antibody
Source	Mouse
Applications	WB IHC
Species reactivity	Human
Recommended dilutions	WesternBlot:1/2000 Immunohistochemistry:1/200 NOTE: Optimal dilutions should be determined by the end user.
Immunogen	Synthetic Peptide
Species	Human
Storage	PBS with 0.02% sodium azide and 50% glycerol pH 7.4. Store at -20° C. Avoid repeated freeze-thaw cycles.
Isotype	IgG1
Clonality	Monoclonal
Concentration	1 mg/ml
Observed band	26kDa
GenelD (Human)	3958
Human Swiss-Prot No.	P17931
Cellular localization	Nucleus. Cytoplasmic in adenomas and carcinomas
Alternative Names	35 kDa lectin CBP 35 CBP35 Gal 3 GAL3 Galactose specific lectin 3 Galactoside binding protein GALBP Galectin 3 Galectin-3 GALIG IgE binding protein L 31 Laminin binding protein Lectin L 29 LGALS2 LGALS3 Mac 2 antigen MAC2
Background	Galectin 3 is one of the more extensively studied members of this family and is a 30 kDa protein. Due to a C-terminal carbohydrate binding site Galectin 3 is capable of binding IgE and mammalian cell surfaces only when homodimerized or homooligomerized. Galectin 3 is normally distributed in

epithelia of many organs in various inflammatory cells including macrophages as well as dendritic cells and Kupffer cells. The expression of this lectin is up-regulated during inflammation cell proliferation cell differentiation and through trans-activation by viral proteins.

Western blot analysis of Hela with Galectin-3 mAb diluted at:3000.



IHC staining of Human thyroid tissue paraffin-embedded with Galectin-3 mouse mAb (6G2) diluted at:200.