



# ELK Biotechnology

**Bcl-2 Mouse mAb**

**Catalog NO.: EM1041**

**For research use only.**

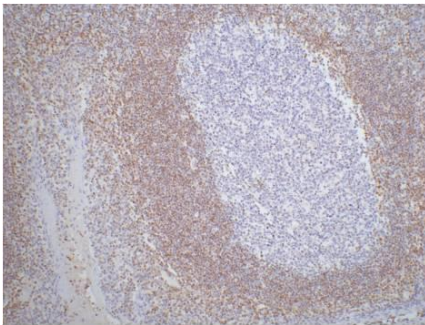
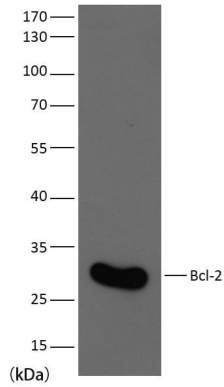
## Overview

---

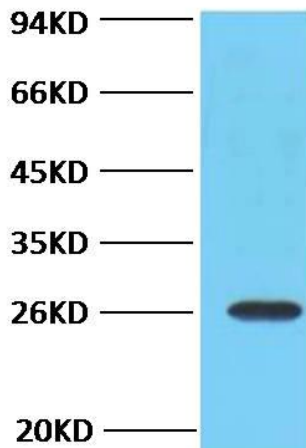
<b>Product name</b>	Bcl-2 Mouse Monoclonal antibody
<b>Source</b>	Mouse
<b>Applications</b>	<b>WB IHC IF</b>
<b>Species reactivity</b>	<b>Human Rat Mouse</b>
<b>Recommended dilutions</b>	<b>WesternBlot:1/1000-2000</b> <b>Immunohistochemistry:1/200</b> <b>Immunofluorescence:1/100-200</b> <b>NOTE: Optimal dilutions should be determined by the end user.</b>
<b>Immunogen</b>	Synthetic Peptide
<b>Species</b>	Human
<b>Storage</b>	PBS with 0.02% sodium azide and 50% glycerol pH 7.4. Store at -20° C. Avoid repeated freeze-thaw cycles.
<b>Isotype</b>	IgG1
<b>Clonality</b>	Monoclonal
<b>Concentration</b>	1 mg/ml
<b>Observed band</b>	<b>26kDa</b>
<b>GeneID (Human)</b>	596
<b>Human Swiss-Prot No.</b>	P10415
<b>Cellular localization</b>	Mitochondrion outer membraneNucleus membraneEndoplasmic reticulum membrane
<b>Alternative Names</b>	B-Cell Leukemia/Lymphoma 2 ;B-Cell CLL/Lymphoma 2
<b>Background</b>	BCL2 is an integral outer mitochondrial membrane protein that blocks the apoptotic death of some cells such as lymphocytes. Constitutive expression of BCL2 such as in the case of translocation of BCL2 to Ig heavy chain locus is thought to be the cause of follicular lymphoma. BCL2 suppresses apoptosis in a variety of cell systems including factor-dependent

lymphohematopoietic and neural cells. It regulates cell death by controlling the mitochondrial membrane permeability.

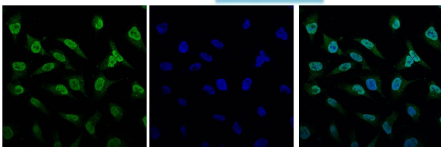
Western blot analysis of extracts from HeLa using Bcl-2 diluted at 1:1000.



IHC staining of Human tonsil tissue paraffin-embedded with Bcl-2 mouse mAb (6B5) diluted at:200.



Western blot analysis of 3T3 with Bcl-2 mouse mAb(6B5) diluted at:1000.



IF analysis of HeLa with EM1041(Left) and DAPI (Right) diluted at:100.